

EMPLOYABILITY BROCHURE

GIVE
YOUR
FUTURE
A PRESENT↑

KEDGE
BUSINESS SCHOOL

Discover
Decode
Do



SOMMAIRE

P.03 The Career Centre
P.07 Internships
P.11 Alternation

P.15 Corporate relations
P.17 Entrepreneurship
P.19 Alumni



CHRISTOPHE MOUYSET,
 Director of Corporate Relations and
 Entrepreneurship

You have selected KEDGE Business School not only for its academic excellence, but also for its close ties with its partner companies and the alumni network. Without a doubt, this is what sets you apart when entering the professional world. Our corporate

relations and entrepreneurship department are professionals dedicated to your employability. They made this brochure to present all the existing services supporting your professional development.

It contains all practical information to help you prepare and find internships, work-study programmes and jobs more effectively. As a guideline for your career path, it presents the steps and best practices to follow, as well as the KEDGE services available to you. From the person who selected you to join the school to the person who will recruit you at the end of the course, all contacts are identified, listed and in permanent connection with the Department of Corporate Relations and Entrepreneurship.

Support in setting up a business and connecting with all members of your alumni community are part of the service and actions that we bring together with one primary goal : your employability.

I urge you to consult this brochure on a daily basis. In addition, a team of 40 specialists is entirely dedicated to your personal and professional development. Their mission ? To give you the keys to achieve your potential in your professional future, and to accompany you throughout your career, first as a student, and then as an alumni.

Make the most of all opportunities to meet and share : My Way days and application workshops, recruitment forums, business conferences from our partner companies...

Wishing you a pleasant reading.

ASSISTING YOU THROUGHOUT YOUR PROFESSIONAL DEVELOPMENT



THE CAREER
CEN+RE
SUPPORTS YOU
ALL ALONG Y@UR
PROFESSIONAL
PROJECT.

IT IS ONE OF THE PILLARS
OF THE Be-U SYSTEM.

BUILDING YOUR FUTURE TOGETHER

The Career Centre (part of the Be-U system alongside the programmes and Learning by doing) has three objectives:

- to help you get to know yourself better,
- to define your professional project in coherence with your personality,
- to build and implement this project.

MY WAY: CAREER/ ORIENTATION DAYS

These days are essential moments in your journey at KEDGE. The Career Centre, the Corporate Relations, the Learning By Doing and the Alumni are all gathered to make My Way Days a unique moment in your course.

The My Way Days are fully focused on your professional orientation and employability.

They are privileged moments to prepare your internship or job search, build and/or develop your network, and meet graduates and recruiters from partner companies.

These events that take place 2 to 3 times a year, take the form of HR meetings, business conferences, workshops, The objective is to make you discover :

- professions, functions and sectors of activity,
- labour market trends,
- recruitment techniques.



THE CAREER CENTRE OFFERS TOOLS, EVENTS AND COACHING WORKSHOPS THAT WILL HELP YOU BOOST YOUR EMPLOYABILITY THROUGHOUT YOUR CAREER PATH.

My Way allows you to develop your soft skills thanks to our professional partners expertise. To register for these events, it's simple: you receive an invitation, discover the programme and register by composing your personalized programme.

WORKSHOPS, COLLECTIVE SESSIONS

Throughout the year, several times a week, the Career Centre offers HR workshops. The aim: to help you finalise your application tools, develop your personal branding and, above all, be efficient in your search for an internship. In groups of 10 to 15 students, these workshops, offered in French and in English, have the following topics:

- writing my CV/CL application tools,
- optimizing my LinkedIn profile,
- using LinkedIn in my internship search,
- Kedge tools for my internship search/internship search methodology,
- pitching my career plan.

To participate, simply register on Job Teaser/Events or ask the Career Centre for more information.





A WIDE RANGE OF TOOLS

A COMPLETE CATALOGUE OF RESOURCES AND GUIDES ARE AVAILABLE ON OUR ONLINE JOB TEASER PLATFORM, ACCESSIBLE ON VIRTUAL CAMPUS.

They give you access to all the tools you need to find an internship or a job, such as :

- offers of internships and work-study programmes in France and abroad;
- methodological guides on application tools, internship and work-study research;
- information on professions;
- information on recruiting companies.

BUT ALSO:

- a Facebook group with hundreds of internship and work-study offers, career information, and any important information for your employability;
- an exclusively reserved Facebook group for international employability;
- a LinkedIn Employability Buddy Group, to build your network abroad;
- job board listings for jobs in France and abroad;

Don't forget to look up all this information before your individual appointments with the Career Centre or a recruiter.



YOUR WORD

"Thanks to the Career Centre's tools and support, I was able to give my career plan a meaning and find an internship quickly. During the My Way days, I have attended conferences of partner companies and expanded my professional network. The coaching sessions allowed me to have a clear vision of my professional aspirations and to be sure to make the right choice. »

CAMILLE, M1 from PGE

ARE YOU ON AN INTERNSHIP OR AN ACADEMIC EXCHANGE?

Correction of CVs and cover letters, job interviews trainings, definition of your professional project... To benefit from all our support services, all you have to do is ask the Career Centre.

It will direct you to the solution adapted to your needs.





INDIVIDUAL COACHING ACCORDING TO YOUR NEEDS

Throughout the year, the Career Centre offers individual coaching sessions with certified coaches.

These appointments take place remotely, via Skype or telephone.

The coaching sessions can focus on different themes:

- refine my professional project,
- identify my skills and know how to put them forward,
- give meaning to my professional project,
- identify my abilities as a leader: what posture?
- make a shift after an internship,
- practice interviewing for an internship or a job.

These meetings are subject to a request to the Career Centre teams beforehand.

You will receive a reply and an appointment proposal within 72 hours from your request.

In the first appointment with the Career Centre, in person or by phone, you will get an assessment of your needs.

At the end of this appointment, you will be directed to the most suitable device and coach.

The duration of the coaching is adapted to your challenge and is evaluated by both the consultant and the Career Centre.



CONTACTS CAREER CENTRE

BORDEAUX

careercentrebordaux@kedgebs.com

MARSEILLE

careercentremarseille@kedgebs.com

TOULON

anne-lise.godin@kedgebs.com

THE INTERNSHIP SERVICE GUIDES YOU THROUGH THE CHOICE,

CONTRACTUALISATION AND SMOOTH
RUNNING OF YOUR INTERNSHIP.

5600

INTERNSHIPS ON AVERAGE PER YEAR,
INCLUDING 2,000 ABROAD

500 €

AVERAGE BONUS
AT BACHELOR LEVEL

1091 €

AVERAGE BONUS AT MASTER LEVEL

→ [INTERNSHIPS](#)

⊕ OPTIMIZE YOUR INTERNSHIP EXPERIENCES

How to choose an internship? What does the legislation provide for?

What steps should you take to obtain an agreement or an amendment to your agreement?

To answer these questions, the Internship team will stay by your side throughout each step. They are also involved in the validation of your missions.

HOW TO FIND YOUR INTERNSHIP?

Finding an internship is an essential step. In order to facilitate and optimize your search, KEDGE partnered with three job boards so that you can benefit from a wide range of internships.

→ JobTeaser.

This leading platform posts more than 50,000 internship offers yearly, in France and abroad. On this jobboard, you can search by type of missions or company, but also by geographical area. You can create alerts or use it for simple consultation.

→ Iagora.

Key platform for international offers. Approximately 8,000 internship, job and international volunteer programme offers are published every year. All types of companies are represented.



THE INTERNSHIP TEAM IS HERE TO GUIDE YOU THROUGHOUT THE PROCESS OF YOUR INTERNSHIPS. IT ALSO ENSURES THE SMOOTH CONDUCT OF YOUR MISSION WITHIN THE COMPANY THAT WELCOMES YOU.

→ Highered Global Talent

is dedicated solely to Equis accredited business schools. This jobboard offers hundreds of internships and international jobs yearly.

THE INTERNSHIP MODALITIES CONVENTION

Convention

- All internships shall be based on an agreement no later than the first day of the internship.
- No agreement will be issued afterwards.

Duration

- Minimum duration: 2 months, unless the nature of the mission is different.
- Maximum legal duration: 6 months.
- End date of internship: it must not be after your delivery of diploma.

Type of contract

An employment contract (fixed-term contract, permanent contract, international volunteer programme, temporary work, civic service) can replace a training agreement.



ALL ABOUT INTER-SHIPS

1

WHERE TO FIND INFORMATION RELATED TO INTERNSHIPS?

On your virtual campus
campus.kedgebs.com/fr/accueil-services/

WITH THE STUDENT OFFICE
studentoffice.marseille@kedgebs.com
studentoffice.bordeaux@kedgebs.com

With the internship teams on the different campuses

2

WHAT INFORMATION WILL YOU FIND?

Schedule of internship departures by programme
(one or more compulsory internships in the student's course).

FAQ (Internship Guide).

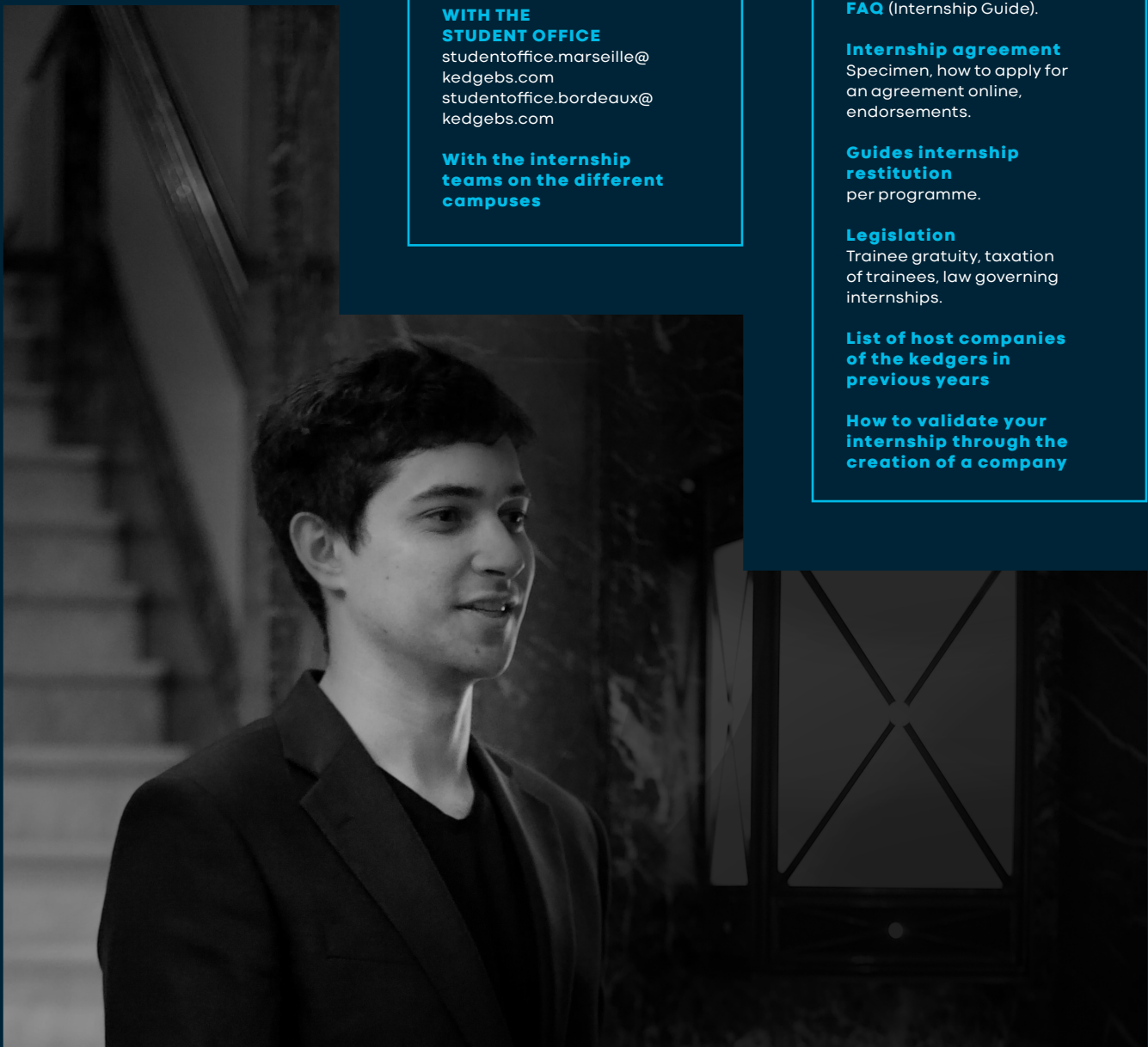
Internship agreement
Specimen, how to apply for an agreement online, endorsements.

Guides internship restitution
per programme.

Legislation
Trainee gratuity, taxation of trainees, law governing internships.

List of host companies of the kedgers in previous years

How to validate your internship through the creation of a company





RIGHTS, DUTIES, GRATUITY... WHAT YOU NEED TO KNOW

What about the internship gratuity?

What do you have to submit to school at the end of the internship?

What if you start your own business while you are in school?

All the information you need.

THE BONUS

In France, a minimum bonus is compulsory for all internships of more than two months.

As an indication, it is currently 3.75 € per hour.

Beyond this legal minimum, which can be revised each year, the amount is at the company's discretion.

For any internship outside France, the company will inform you of the bonus if it plans to offer one.

SCHOLARSHIP AND VISA APPLICATIONS

For information on visas, you should consult the websites of the embassies concerned. For information on scholarships, please email boursesmarseille@kedgebs.com (Marseille campus) and financement.mobilite@kedgebs.com (Bordeaux campus).

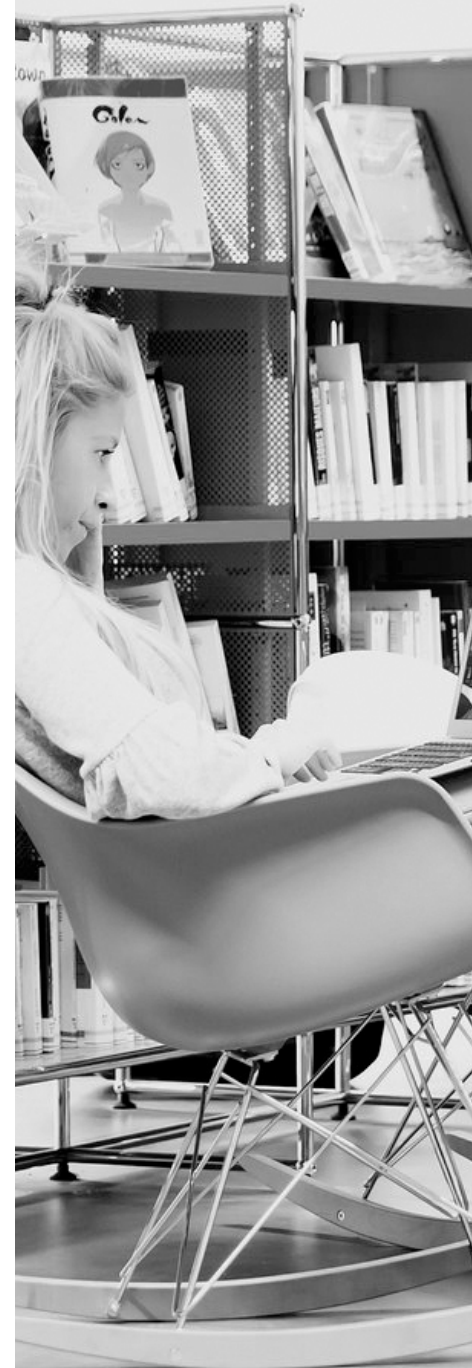
RESTITUTION

A restitution to school is compulsory for all internships. The modalities of this restitution depend on your programme and are available on the virtual campus.

BUSINESS CREATION AND INTERNSHIP

It is important to carry out internships to develop skills, acquire working methods and understand organizations. The creation of your company can, exceptionally, validate a mandatory internship, under two conditions:

- obtaining the student-entrepreneur status from the PÉPITE scheme in your region,
- the agreement of your programme.



INTERNSHIP CONTACTS

BORDEAUX/PARIS
aidestagebordeaux@kedgebs.com

MARSEILLE
aidestagemarseille@kedgebs.com

TOULON
aidestagetoulon@kedgebs.com

THE WORK-STUDY SERVICE ACCOMPANIES ALL STUDENTS

WHO CHOOSE THE APPRENTICESHIP
AND THE PROFESSIONAL TRAINING
CONTRACT.

BOOST YOUR EMPLOYABILITY WITH AN APPRENTICESHIP

At Kedge, it is mainly apprenticeships or professional training contracts. They are ideal professional career paths that provide funding for your course and increase your chances of being recruited at the end of the contract.

WHAT IS A WORK-STUDY PROGRAMME?

Following a work-linked training course means following an academic path that alternates periods of theoretical training and periods of work practice in a company. The work-study programme is implemented as part of specific employment contracts: apprenticeship contract, professional training contract. It is a real contract between the apprentice, the company and the training institution based on mutual work commitments.

WHY CHOOSE A WORK-STUDY PROGRAMME?

The apprenticeship period allows you to put to good use and consolidate the lessons learnt in the company. It is also a way to acquire recognized professional experience and to benefit from financial support. By opting for work-study, you multiply your chances of recruitment at the end of the training.



THE WORK-STUDY*
PROGRAMME MAKES
IT POSSIBLE TO COMBINE
THEORETICAL AND
PRACTICAL TRAINING.

WHAT ARE THE REQUIRED QUALITIES?

If you opt for a work-study programme, you will engage in demanding studies during which you will combine courses, academic work and professional activity.

You will therefore need to be diligent, adaptable, rigorous, tenacious and professional. You will have to be well integrated and respect the organization of the company and the school.

HOW TO FIND YOUR HOST COMPANY?

All the offers received by companies are posted on Job Teaser. The final validation of the mission will occur during the review of your internship description.

The distribution of work-study opportunities by KEDGE does not mean that they will be automatically validated by the training programme. The service provides you with a CV library, accessible by all our partner companies on Virtual Campus.

It is important that you post your CV and update it on a regular basis.

** Limited places, eligibility criteria to be respected.*



WHAT PROGRAMMES? WHAT TERMS?

At Kedge, students from some generalist courses and most of the specialized courses can follow all or part of their studies within a work-study contract.

To follow your work-study course, you must have a host company.

ACCESSIBLE KEDGE WORK-STUDY PROGRAMMES

Generalist programmes.

- The Grande École Programme on the Bordeaux and Marseille campuses.
- The KEDGE Bachelor Programme offered in apprenticeship, during the 3rd year, on the campuses of Marseille, Avignon, Toulon, Bastia and Bayonne depending on the chosen track.

Specialized MS/Title programmes.

- International Trade & Logistics
- ISLI, Global Supply Chain Management
- IMPI, Wealth & Real Estate
- IMR, Risk Management
- MVS, Wine & Spirits Management
- ISMQ, Quality Management
- MAI, Innovation & International Purchasing
- Business Engineer
- Digital & Data Marketing
- Innovation & Health

The second-year university (bac+2) specialised programme.

- CELLARS Trade, Wines & Spirits

HOW TO GET AN APPRENTICESHIP (for foreign nationality students)

To be eligible for a work-study contract (apprenticeship or vocational training), you must meet the criteria and be in possession of a full-time work permit when you sign the contract. We strongly advise you to look up the information on this subject on the Public Service website: service-public.fr/particuliers/vosdroits/N11240

YOUR WORD

«The apprenticeship makes us grow, both personally, by making us more confident and mature, and professionally, by giving us more responsibility and developing strong employability.»

CORENTIN, business engineer, Master 1, apprenticeship contract

« Alternating courses and company practice allows us to quickly correct a deficiency in a given field. Also, you don't get bored and the cycles are long enough to follow a project (in the company) from the beginning to the end. Finally, being truly involved in the business enhances our chances of being hired in the end. In my case, the managers gave me a lot of credit for my work, more confidence and responsibility than in an internship.»

MAXIME, graduate (ex apprentice PGE), Société Générale

« After three years of apprenticeship, I strongly believe this choice is the best way to move from theory to practice. With this option, we are no longer dealing with professors or friends, with scoring criteria sometimes based on a certain leniency. Our future employers and colleagues evaluate our projects and assignments based on our knowledge, know-how and interpersonal skills. The final objective is to be able to say to our future employer: "Yes, I am operational as soon as I join your company.»

BÉNÉDICTE, Master 2, Professional training contract Innovation & Design Thinking





THE APPRENTICESHIP CONTRACT

The apprenticeship contract is a contract of written work between an employee and an employer. It allows the apprentice to follow a work-linked training course in a company under the responsibility of an apprentice master and at the training centre.

The aim:

To acquire a professional qualification with a diploma. The OPCO will cover the national cost of the company's branch of activity (Values set by "France Compétences"). A delta will therefore remain at the company's expense if and only if the level of OPCO coverage is lower than the amount of the tuition fees. The company undertakes to cover the difference.

The apprentice's salary depends on his age, the level of training and his previous experience if he has completed an apprenticeship with a diploma (year N-1).

There is a legal minimum wage for each age bracket which corresponds to a percentage of the minimum salary in place on January 1st.

Apprentice age	Reference wage	1 st year of contract CAVES, IMPI, IS, MDD	2 nd year of contract IA M1, IMR, ISLI, ISMQ, ITL, MAI, MVS, PGEM1	3 rd year of contract IA M2, KB3, PGEM2
Less than 18	Minimum wage	27%	39%	55%
		415,64 €	600,37 €	846,68 €
18 to 20	Minimum wage	43%	51%	67%
		661,95 €	785,10 €	1031,41 €
21 to 25	Min wage or conventional min wage if superior	53%	61%	78%
		815,89 €	939,05 €	1200,75 €
26 and older	Min wage or conventional min wage if superior	100%	100%	100%
		1539,42 €	1539,42 €	1539,42 €

Value of monthly minimum wage on 01/01/2020 : 1539,42 €

THE PROFESSIONAL TRAINING CONTRACT

The financing of the professionalization contract is done through the total or partial coverage by the OPCO to which the company contributes.

Each company must contact its OPCO to find out the amount of the covering, which may vary from year to year.

The billing of the student fees to OPCO or to the company does not start until the signature of the professionalization contract by all parties. Remuneration is calculated on the basis of the minimum wage.

Student age	Reference wage	CAVES/IA/IMPI/IMR/IS/ISLI/ISMQ/ITL/MAI/MDD/MVS
Less than 20	Minimum wage	65%
		1000,62€
21 to 25	Minimum wage	80%
		1231,54 €
26 and older	Min wage or conventional min wage if superior	100 % min wage or 85 % convention min wage
		1539,42 €

Value of monthly minimum wage on 01/01/2020 : 1539,42 €

APPRENTICESHIP CONTACTS

BORDEAUX : alternancebordeaux@kedgebs.com

MARSEILLE : alternancemarseille@kedgebs.com

TOULON : toulonalternance@kedgebs.com

INTERNATIONAL TRADE AND LOGISTICS ET KEDGE BACHELOR
toulonalternance@kedgebs.com

MAI/IMPI/MVS
alternancebordeaux@kedgebs.com

MARKETING DIGITAL & DATA
alternancemarseille@kedgebs.com

THE CORPORATE RELATIONS DEPARTMENT

ANIMATES KEDGE PARTNERS
THE BUSINESS COMMUNITY TO BOOST
YOUR EMPLOYABILITY.

YOUR WORD

«It is an opportunity to make ourselves known, to accompany students in their development and a wonderful human encounter. For Hilti, it is a way to listen to young people and their needs and to better understand them tomorrow. During this day, I lead a workshop where, in one minute, you have to pass on an idea, make yourself known, make people want to come and be contacted! There are many workshops to better understand the next step for them: their entry into the job market.»

PASCAL LAUNAY, key account manager HILTI France

«As a KEDGE alumni, it is a pleasure to work with the faculty to think about the strategic directions of the programmes. It is also an opportunity to best prepare students for the digital and e-commerce professions in order to boost their employability. We are fortunate to have many Kedgers at Amazon who innovate on a daily basis for our customers and partners. Two of our employees, Mathilde and Guillaume, KEDGE graduates, are at the origin of the Amazon Campus Challenge which allows Master students from all over France to live a unique and highly formative entrepreneurial experience on the future sector that is e-commerce.»

FABIEN PONS, Market Place Category Leader, Amazon

«KEDGE's recruiting events gave me the opportunity to practice and showcase myself in front of professionals in order to develop my employability. The sales competition with HILTI and P&G, the school's partner companies, quickly enabled me to get a permanent contract as a business developer.»

AZIZ, M2 PGE student in work-study programme



CORPORATE RELATIONS : A KEY TO YOUR CAREER PATH

recruitment events, informal meetings, conferences, case studies, etc... are part of all the initiatives Kedge is involved in with its partner companies.

Essential opportunities to boost your employability and clarify your professional project.

PARTNERSHIPS IN ACTION

KEDGE's Corporate Relations department organizes numerous events and meetings with its partner companies. They interact with us by recruiting interns, work-study students and young graduates during dedicated days on your campus.

Other initiatives: partner companies invite experts to various career events to help you build your professional project and are also involved in associative projects and teaching modules.

CORPORATE EVENTS DESIGNED IN DIFFERENT FORMATS

Corporate Relations act at each stage of development of your student path thanks to the :

- **Recruitment events:** forums, jobdatings, afterworks, tailor-made recruitment, sales competitions.
- **Company meetings:** My Way, companies visits...
- **Tailor-made events:** conferences, "Come and have lunch with the Boss", "Brand Day"...
- **Educational projects:** case studies, missions, student projects, Pro-Acts...
- Challenges, Business Game, prizes...

RECRUITMENT FORUMS

Company forums: Company forums: more than 100 companies and 200 recruiters offer internships, work-study programmes, fixed-term or permanent contracts.

Apprenticeship job datings on Paris and Bordeaux campuses for all specialized masters and titles help you find a host company.

Throughout the year, recruitment sessions are organised for companies such as Procter & Gamble, Chanel, L'Oréal...



KEDGE is the first school to have obtained the ECOFEST label for its Enterprise Forums 2019/2020 edition.

The Ecofest label is the label of eco-responsible events, it is a real guarantee of quality.

N°9

KEDGE Business School ranks 9th in the Le Figaro ranking Master Student PGE 2018 (+1 place)

18/20

KEDGE's score in the school/company relations rating criterion

ENTREPRENEURSHIP

WITH ITS THREE INCUBATORS AND ITS ACCELERATOR ON THE BORDEAUX, MARSEILLE AND TOULON CAMPUSES, KEDGE SUPPORTS STUDENTS AND GRADUATES FROM THE PROJECT TO THE CREATION OF A COMPANY.

13

MILLIONS RAISED BETWEEN 2016 AND 2019

80

PROJECTS AND START-UPS SUPPORTED IN 2018-2019

108 000

EUROS IN GRANTS PAID TO INCUBATORS

250

PROJECTS SUPPORTED SINCE 2014



YESTERDAY AN IDEA, TODAY A COMPANY

WHERE YOU LOVE

- whereyoulove.com
- Incubate 2018
- 17 employees
- 5 to 10 M€ fund raising in progress

«We have received exemplary strategic and operational support from the Business Nursery coaches and experts, it made it possible to prepare our next fundraising campaign planned for 2020.»

ALEXANDRE BONHOMME,
PGE 2019 student



INCUBATORS AND ACCELERATORS: OUR ASSETS TO LAUNCH YOUR CAREER

Kedge has set up three incubators and an accelerator on its Marseille, Bordeaux and Toulon campuses.

The objective?

To accompany students or alumni from the idea to the creation of a company, over 6 months, renewable. all these systems are labeled FRENCH TECH

THE SELECTION CRITERIA

Each year, more than 350 applications are submitted.

In order to guarantee the commitment and involvement of the project leaders and the quality of the applications, a selection is essential. Three criteria are considered:

- **The team.**
The multidisciplinary team or the entrepreneur must know how to surround himself.
- **The market.**
Knowledge of the market and its competitors with regard to the identified need.
- **Innovation.**
The project must present an innovation in the broadest sense (innovation of use, services, products or business model).

Each year, a call for projects for all campuses is scheduled from 1st to 30th September.

SELECTION PROCESSES

There are three steps in the process of selecting files:

- Selection on file. It must be completed and sent online (address below) during the call for projects period.
- The individual interview with a coach from the business nursery and a Pro-Act entrepreneur coach.
- Presenting in front of a jury composed of partners, experts and entrepreneurial incubator mentors.

SERVICES OFFERED

Entrepreneurs benefit from a range of services, mixing individual coaching and group workshops. The idea: to encourage sharing best practices and experiences. As part of the coaching, the school has set up partnerships with Amazon WS, Google and HubSpot.

KEDGE is also a member of the France Digital network and the French Tech network in each of its territories.

Depending on the stage of the project or startup :

- Monthly individual meetings with a coach-consultant specialized in coaching startups.
- More than 250 meetings per year with experts on various topics: growth hacking, pitch training, press releases, strategy, accounting, finance, fundraising, recruitment, commercial development, internationalization, legal status, partnership agreements, company law, etc.
- More than 40 workshops and conferences per year on our campuses.
- 500 m² in Marseille (financed by the Daniel & Nina Carasso Foundation), 350 m² in Bordeaux Toulon and Paris.

ENTREPRENEURSHIP CONTACTS

SUBMIT YOUR APPLICATIONS ON:
entrepreneurship.kedge.edu/creation/business-nursery/applicationform

BORDEAUX : diane.lenay@kedgebs.com

MARSEILLE : feyrouz.tripotin@kedgebs.com
sebastien.mei@kedgebs.com

TOULON : agnes.gaudart@kedgebs.com

WITH MORE THAN 70,000 GRADUATES, THE KEDGE ALUMNI NETWORK

IS A MAJOR ASSET
FOR YOUR EMPLOYABILITY.

70 000 GRADUATES

250 EVENTS PER YEAR

60 BRANCHES AND PROFESSIONAL CLUBS
THROUGHOUT THE WORLD

+ 200 VOLUNTEERS

1200 MENTORS AT YOUR DISPOSAL

107 000 MEMBERS ON SOCIAL NETWORKS

→ ALUMNI

JOIN KEDGE ALUMNI, AN INFLUENTIAL COMMUNITY

Kedge alumni offers you the chance to connect to this huge community and support you throughout your career.

Online directory, professional and networking events, access services, digital community...

Many tools are available to you as soon as you start school.

Taking advantage of these tools will help you build your network and your professional project.

SERVICES TO HELP YOU FIND A JOB

To support its graduates and graduates to be throughout their lives, KEDGE has created dedicated services.

→ Mentoring.

It connects a graduate (the mentor) and a student.

The mentor, an experienced professional, accompanies the mentee in the construction of his or her career project (advice, networking, etc.).

→ The companies discoveries.

Every year, KEDGE Alumni organizes events in its partner companies.

The students of the school are received by graduates in privileged conditions to discover these companies and professions.



JOINING KEDGE MEANS
JOINING A POWERFUL
NETWORK OF MORE THAN
65,000 GRADUATES
AROUND THE WORLD,
WHICH WE ARE STRIVING
TO ACTIVATE...AND TO
GROW.

→ Internship and job offers.

Our platforms (Goingglobal and jobboard) are at the service of your employability: offers available, email alerts, country guides, etc.

KEDGE Alumni also gives you the opportunity to participate in online recruitment forums, where, in just a few clicks, you can be in contact with recruiters.

→ Networking.

KEDGE Alumni organizes more than 250 events per year in France and abroad. Friendly and themed, those events are in the majority open to students. Do not hesitate to participate, they allow you to build your first professional network.

→ Post-graduation support.

Once you have graduated, the Alumni Service keeps offering you a wide range of services: employment support, business creation, retraining, LinkedIn workshops, personal development workshops, outplacement...





A NETWORK AND INFORMATION JUST A CLICK AWAY !

By becoming a student at the school, you will become part of the Kedger community.

As such, you have access to the services of KEDGE Alumni. On kedgebs-alumni.com, you will find :

- The phone book. It lists all the students and graduates of the group.
- Your profile sheet. Update it regularly so that you can be contacted by members of the community (recruitment, networking, business opportunities, etc.).
- Job offers in France and abroad.
- The next thematic and convivial events gathering the members of your community and in which you can participate.
- Links to your KEDGE Alumni communities on Facebook, LinkedIn and Twitter.

KEDGE Alumni is also available on iPhone and Android through our app!

ALUMNI CONTACT

NOELLIE LAMBERT
noellie.lambert@kedgebs.com



YOUR WORD

MENTORING, A PERSONALIZED EXCHANGE WITH A GRADUATE MENTOR OF YOUR CHOICE!

"Today, thanks to the mentoring system, I have optimised my chances of landing an internship. I have received sound advice to help me succeed in my interviews, which enabled me to rework my CV according to recruiters' expectations. Mentoring is a great opportunity for students who want to be confronted to the reality on the ground. I recommend it to everyone. »

« Coming from different backgrounds and working in multiple professional sectors (purchasing, logistics, commerce, finance, management, marketing, communication, wine, design...), the thousands of graduates of KEDGE Business School form a unique contact base. »

"A strategy resolutely focused on the graduate, to accompany them throughout their working life, whatever the stages and needs. »

KEDGE

ALUMNI

CONTACTS

CORPORATE
RELATIONS DEPARTMENT

RECRUITER RELATIONS

Bénédicte Pierrebenedicte.pierre@
kedgebs.com

CORPORATE RELATIONS

BORDEAUX

Isabelle Blombouisabelle.blombou@
kedgebs.com

MARSEILLE

Nelida Jimeneznelida.jimenez@
kedgebs.comINTERNSHIPS AND WORK-
STUDY PROGRAMMES**Valérie Andres Gonder**valerie.andres-gonder@
kedgebs.com

ALUMNI

Frédérique Gobertfrederique.gobert@
kedgebs.com

CAREER CENTRE

Delphine Conqueretdelphine.conqueret@
kedgebs.com

CAMPUSES

BORDEAUX
HEAD OFFICE680, cours de la Libération
33405 Talence Cedex**Tél.: +33(0) 556 845 555**

MARSEILLE

Domaine de Luminy
BP 921 13288
Marseille Cedex 09**Tél.: +33(0) 491 827 800**

PARIS

40, avenue des Terroirs
de France - Bâtiment
Lumière - 75012 Paris**Tél. : +33(0) 142 812 020**

TOULON

Place des Écoles
83000 Toulon**Tél.: +33(0) 494 918 250**

SHANGHAI

ICCI (Institute of Cultural
and Creative Industry)
Room 320, KoGuan-Law
School - Shanghai Jiao Tong
University - 1954 Huashan
Road, Shanghai 200030,
P. R. China

SUZHOU

N° 158 Reai road,
Industrial Zone, Suzhou,
Jiangsu, P.R.China, 215123

DAKAR

Sacré Cœur III Pyrotechnie
BP 25 208 Dakar Fann**contact@bem.sn**

HOW DO I LOG ON TO **JOBTEASER?**

The platform to support you with your employability.

GO TO YOUR VIRTUAL CAMPUS "EMPLOYABILITY" SECTION

Discover 



CONNECT TO MORE

THAN 35,000 INTERNSHIP AND WORK-STUDY OFFERS PER YEAR!



DOWNLOAD YOUR CV

AND GET RECRUITED DIRECTLY!



APPLY TO EXCLUSIVE OFFERS

MORE THAN 8,000 RECRUITERS IN FRANCE AND INTERNATIONALLY!



STAND OUT BY VIEWING VIDEOS,

ARTICLES AND COMPANY NEWS



kedge.edu



BORDEAUX
D★KAR
MARSEILLE
PARIS
TOULON
SHANGHA!
SUZAOU

PRINTING: PRINT CONCEPT

